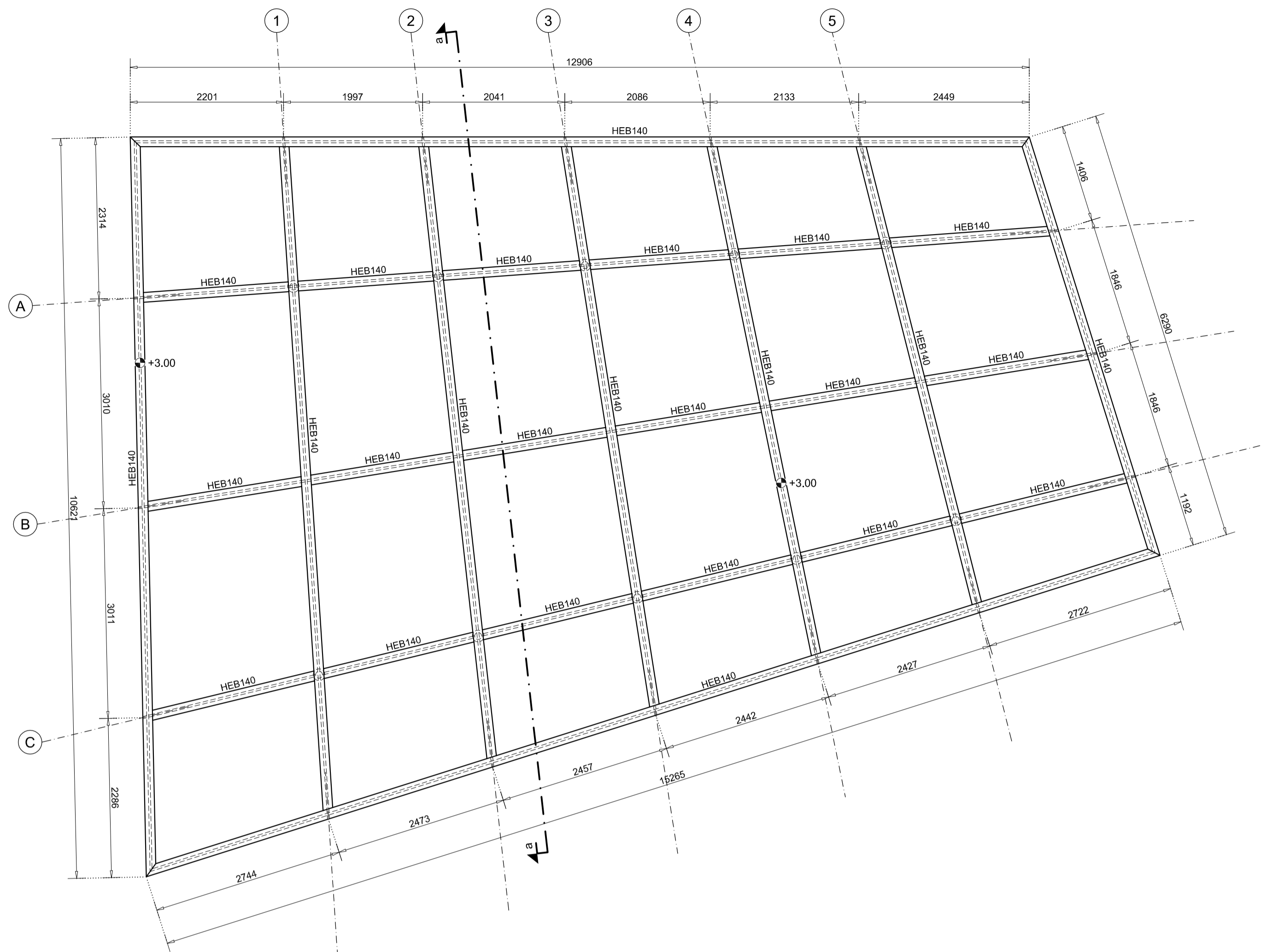


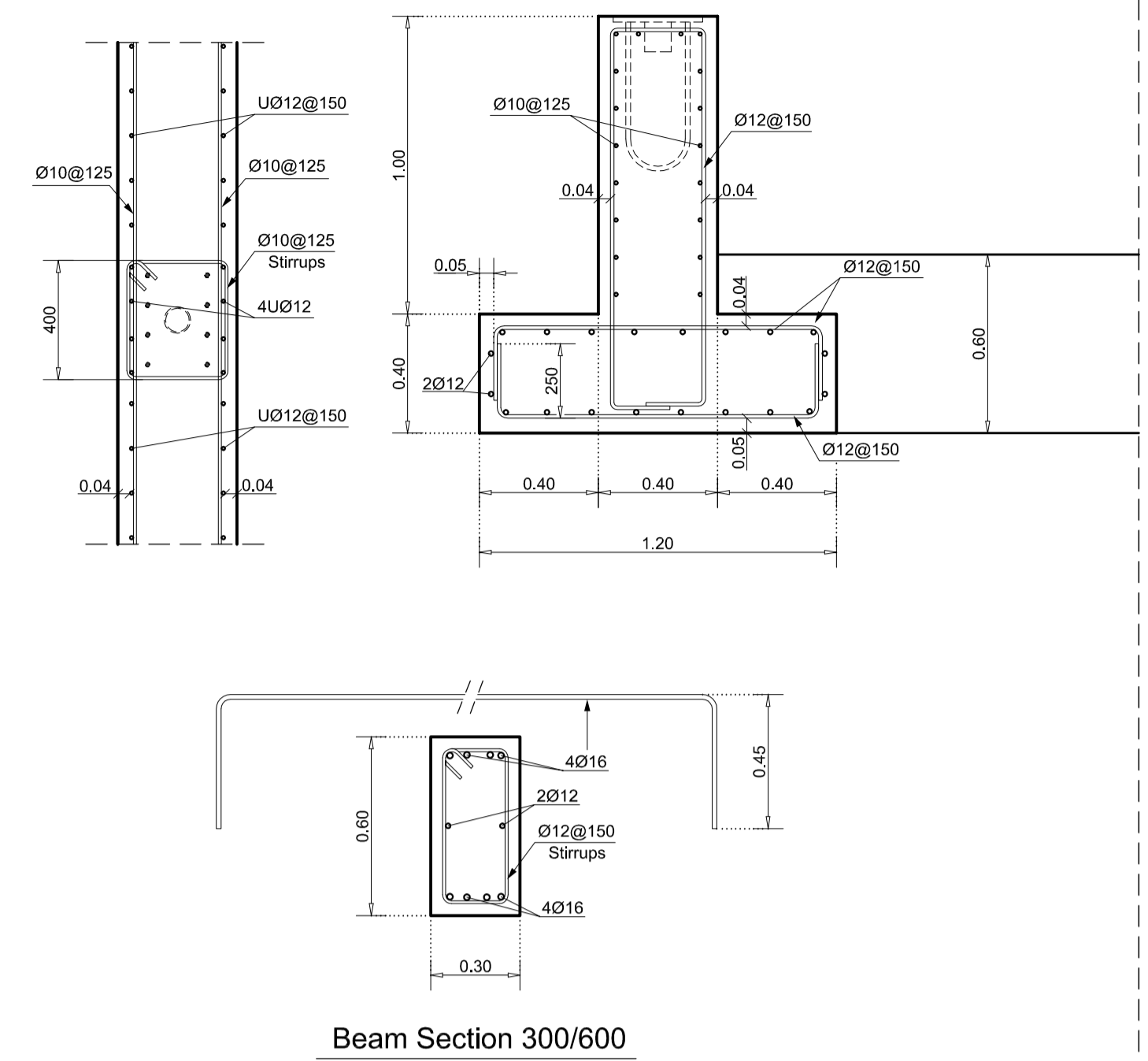
Deck at elevation [+3.00]

Scale 1:50



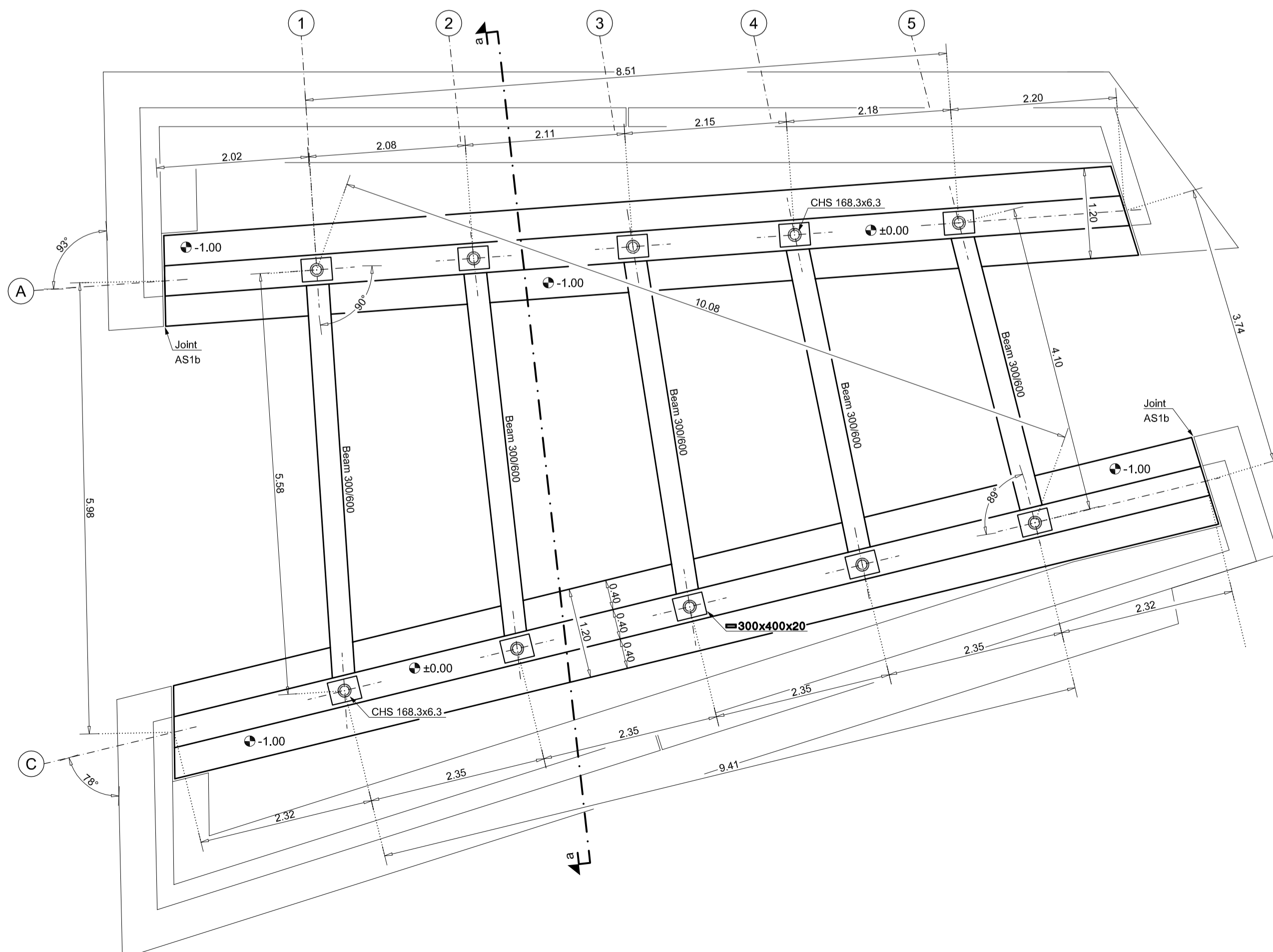
Reinforcement Details

Scale 1:20



Foundation

Scale 1:50



SHENYANG expo 2006

THE GARDEN OF GREECE

project assigned and financed by:

HELEXPO

architectural project:

PRODROMOS NIKIFORIDIS, architect
BERNARD CUOMO, architect

collaborators:

NIKOS BISKOS, architect
ELEFThERIA ZOGRAFU, architect

statics:

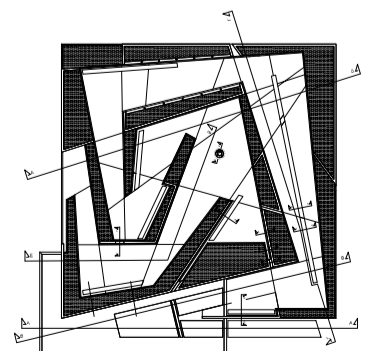
IAKOVOS LAVASSAS, civil engineer
PANTELIS ZERVAS, civil engineer
GIORGOS NIKOLAIDIS, civil engineer
MARIA STEFANOURLI, civil engineer

electrical/mechanical planning:

PANAGIOTIS KIKIDIS
DIMITRIS BOZIS
GERASSIMOS KAMPITSIS

gardening consultant:

ANTHIMOS ZAHARIADIS

DATE: SEPTEMBER 29 2005
REVISION NUMBER: 1PLAN
PERGOLA (1/2)

1:50 & 1:20

S₁₀